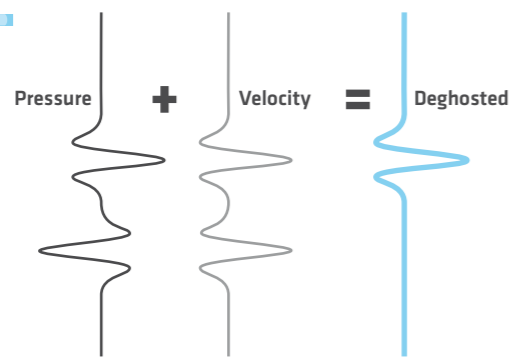
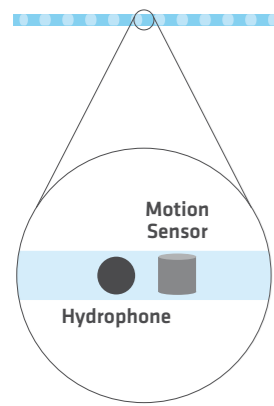


# GeoStreamer®

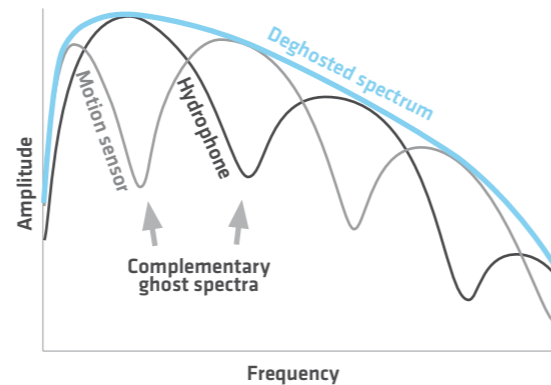
## Dual Sensors

Complementary recordings facilitate deghosting by wavefield separation at all water depths.



## Prestack Deghosting – More Options

Deghosting using dual-sensor measurements with their complementary ghost spectra eliminates frequency gaps, and provides access to separate wavefield components for advanced processes like PGS SWIM, FWI and Reflection Tomography.



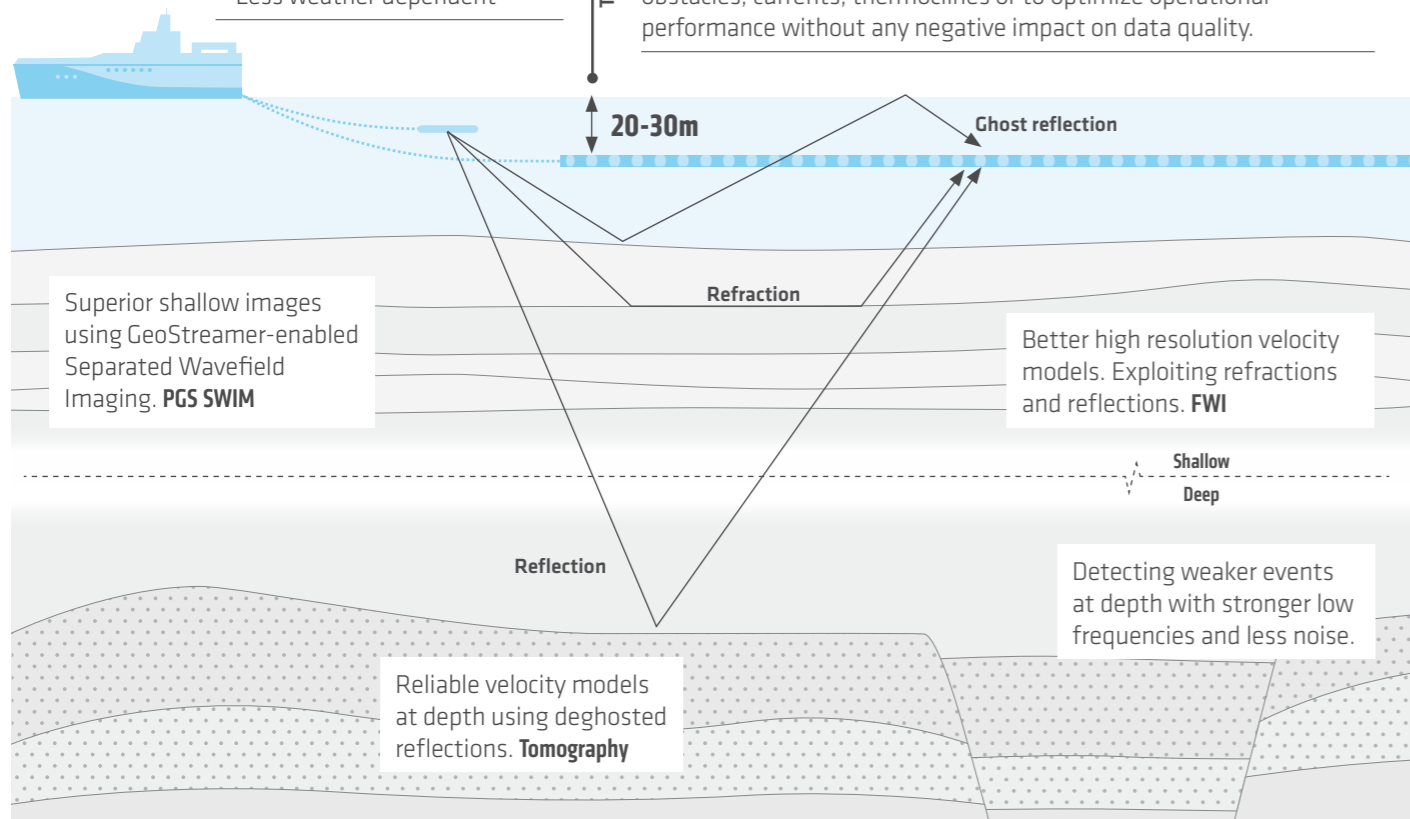
PGS vessels  
**100%**  
GeoStreamer

## Deep Tow

- Better signal, less noise
- More low and high frequencies
- Less weather dependent

## Flexible Tow Depth

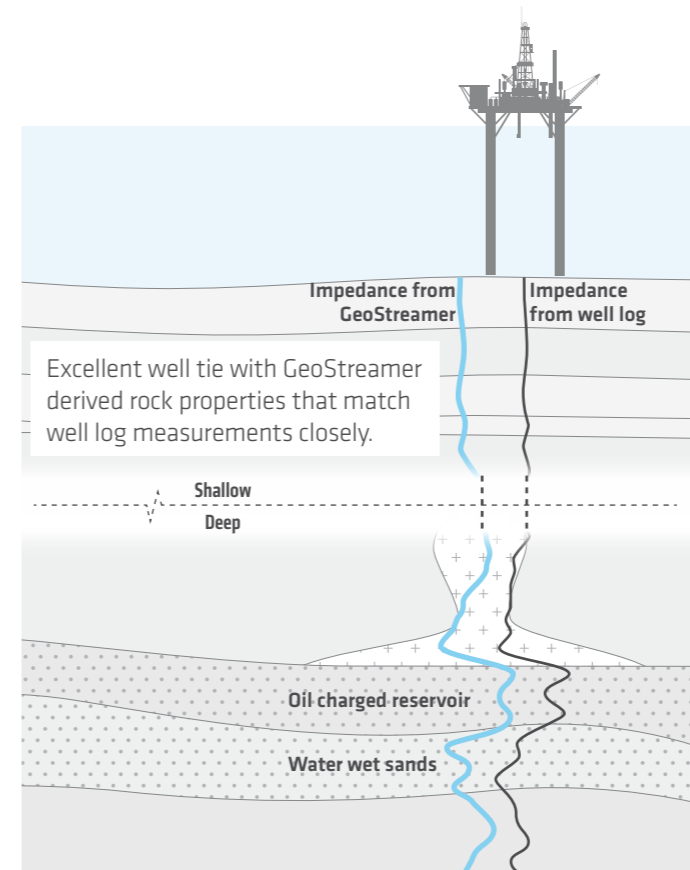
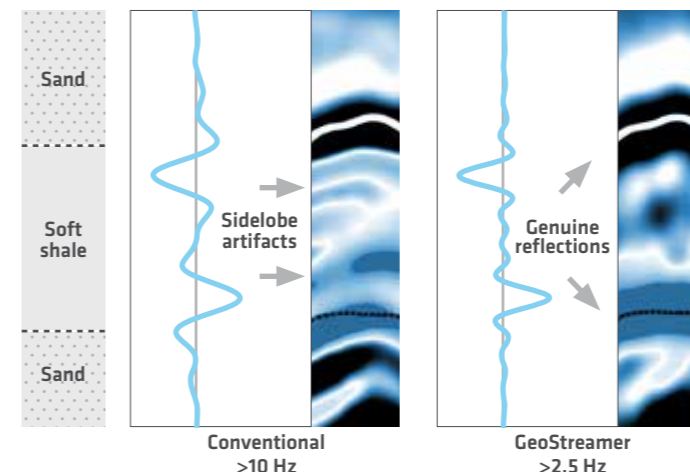
Dual-sensor recording enables us to re-datam the pressure wavefield to any depth. Towing depth can be adjusted in response to shallow obstacles, currents, thermoclines or to optimize operational performance without any negative impact on data quality.



**1.0 Million**  
meters of active streamer

## Broader Bandwidth – Sharper Boundaries

Rich low frequency content reduces sidelobe artifacts, providing clearer reservoir details.



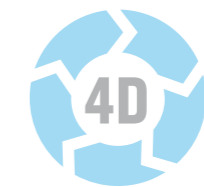
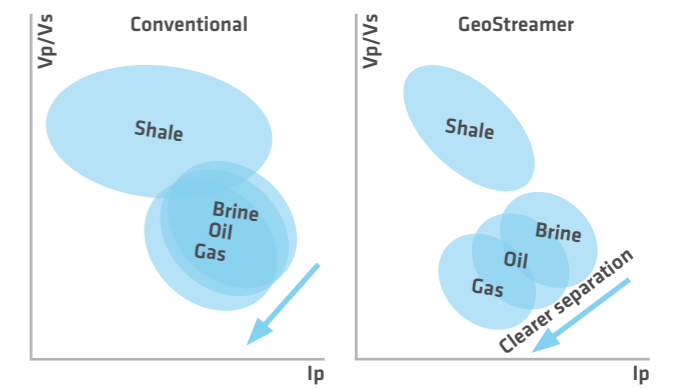
Experience that counts  
**650 000 KM<sup>2</sup>**  
acquired worldwide

January 2019

since  
**2007**

## De-risking with Precise Rock Properties

GeoStreamer prestack deghosting provides reliable attributes for better understanding of rock and fluid distribution. Improved attribute computations reduce uncertainty and enable more precise estimation of reserves.



## Monitoring Reservoir Changes

Wavefield reconstruction enables high repeatability for both legacy surveys and future 4D monitoring independent of sea-state. This reveals more subtle production-related changes.

## Proven in all Play Types

- SUB-SALT** Improved signal recovery and amplitude characterization.
- SUB-BASALT** Clearer sub-basalt imaging and intra-basalt layer definition.
- CLASTICS** Reliable reservoir properties without the need for well control.
- CARBONATES** Detailed mapping of internal structures and better porosity prediction.
- INJECTITES** Resolution of complicated geometries and identification of true geological impedance boundaries.

